

DETROIT PUBLIC SCHOOLS COMMUNITY DISTRICT

Board of Education

Honorable Dr. Iris Taylor
President

Honorable Angelique Peterson-Mayberry
Vice President

Honorable Sonya Mays
Treasurer

Honorable Misha Stallworth
Secretary

Honorable Dr. Deborah Hunter-Harvill
Member

Honorable Georgia Lemmons
Member

Honorable LaMar Lemmons
Member



Alycia Meriweather
Interim Superintendent

Nekeya Irby
Senior Executive Director of Curriculum,
Instruction and Accountability

Leenet Campbell-Williams
Network 1 (Priority Schools)

Rebeca Luna
Network 2

Brenda Belcher
Network 3

Alvin Wood
Senior Executive Director of
School Support

John R. King Academic and Performing Arts Academy

15850 Strathmoor Street
Detroit, Michigan 48227-2965

2015-2016 Annual Education Report (AER) Cover Letter

March 13, 2017

Dear Parents and Community Members:

We are pleased to present you with the Annual Education Report (AER) which provides key information on the 2015-16 educational progress for the John R. King Academic and Performing Arts Academy. The AER addresses the complex reporting information required by federal and state laws. The school's report contains information about student assessment, accountability, and teacher quality. If you have any questions about the AER, please contact Felicia Cook, Principal at (313) 866-9600 for assistance.

The AER is available for you to review electronically by visiting the District's website <http://detroitk12.org/aer>, the school's website at <http://detroitk12.org/schools/jrking/> or the MiSchool Data website at <https://goo.gl/FhO6qp>. You may review a copy in the main office at your child's school or in the Parent Resource Room at Detroit Collegiate Preparatory High School at Northwestern, 2200 W. Grand Boulevard, Detroit, Michigan.

For the 2016-17 year, no new Priority or Focus schools were named; some Priority or Focus schools did exit their status because they met the exit criteria. New Reward schools were identified using school rankings and Beating the Odds information. A Focus school is one that has a large achievement gap between the highest and lowest achieving 30% of schools. A Priority school is one whose achievement and growth is in the lowest 5% of all schools in the state. A Reward school is one that has achieved one or more of the following distinctions: top 5% of schools on the Top-to-Bottom School Rankings,

top 5% of schools making the greatest gains in achievement (improvement metric), or “Beating the Odds” by outperforming the school’s predicted ranking and/or similar schools. Some schools are not identified with any of these labels. In these cases, no label is given. Our school was identified as a Priority school.

The key challenges for our school are as follows:

We did not meet the 90% attendance rate goal.

The attendance rate for the All Students subgroup is 81.64%.

We did not test 95% of our students.

Only 93.18% of the Students with Disabilities subgroup were assessed in science.

Only 94.69% of the All Students; 94.62% of the African American and 94.48% of the Economically Disadvantaged subgroups were assessed in social studies.

We did not attain Differentiated target achievement goals for all subgroups of students in English Language Arts.

Only 0.00% of the Bottom 30% and 13.59% of the Students with Disabilities subgroups met the Differentiated target in English Language Arts

We did not attain Differentiated target achievement goals for all subgroups of students in mathematics.

Only 0.00% of the Bottom 30% and 10.68% of the Students with Disabilities subgroups met the Differentiated target in mathematics.

We did not attain Differentiated target achievement goals for all subgroups of students in science.

Only 6.43% of the All Students; 0.00% of the Bottom 30%; 6.47% of the African American; 3.68% of the Economically Disadvantaged and 9.38% of the Students with Disabilities subgroups met the Differentiated target in science.

We did not attain Differentiated target achievement goals for all subgroups of students in social studies.

Only 0.00% of the Bottom 30%; 14.08% of the Economically Disadvantaged and 9.52% of the Students with Disabilities subgroups met the Differentiated target in social studies.

We are actively working to address our Michigan School Scorecard issues, accelerate student achievement and close persistent gaps in achievement by implementing the following key initiatives:

- English Language Arts: J.R. King will improve ELA by utilizing writing across the curriculum and utilizing project based learning.
- Mathematics: Science: J.R. King will improve Math and Science utilizing manipulatives, project based learning and utilizing the learning the curriculum.
- Social Studies: J.R. King will improve Social Studies by utilizing the project based learning and utilizing the Marzano Strategies.

Participation Rate (95%) for all academic areas and all subgroups:

In all our subgroups, we have made it a point to review the list and to make sure all students take all exams, become actively engaged in their classrooms and to ensure students are on tasks with various strategies. With the help of our attendance agent, we have begun to purge our lists at the beginning of the year for those students who no longer attend our school. Our school has made it a point to update the records to ensure all students are participating. Also, our attendance agent has gone out to find students who have been absent and made it a point to test them. At John R. King we have developed assemblies/rallies around the importance of participating in testing and have had students committed toward this initiative. Subgroups: (African-American/Blacks) 95% of our students are Black/African American and we will have full participation by ensuring all students understand the importance of participating.

Parent Involvement

Parents can be involved by...

- Participating in our PACSA (Parent) workshops and meetings.
- Parents can get involved by volunteering more to assist the school with the climate.
- Parents can get involved by actively showing up to Parent-Teacher Conferences.

State law requires that we also report additional information.

Process for Assigning Pupils to the Schools

Open Enrollment Initiative

Detroit Public Schools Community District has an “Open Enrollment Initiative.” This initiative allows students to elect to attend any Detroit Public School Community District school without being required to live within the boundary for that school. The “Open Enrollment Initiative” does not apply to the Examination High Schools or Application Schools. Parents may enroll their

Process for Assigning Pupils to the Schools (Continued):

child(ren) in the school of their interest as long as the school has not reached capacity for their particular grade. Enrollment preference is given to students who live within the boundary of a school. It should also be noted that transportation will not be provided for students who select a school outside of the boundary of their home school. "Open Enrollment Initiative" resources can be found on our website at: http://detroitk12.org/resources/prospective_students/

Application Schools

Detroit Public Schools Community District has twenty-two (22) schools that require an application for enrollment. Families can apply during the application process window. Applications are open to families of current Detroit Public Schools Community District students as well as those newly enrolling or attending school elsewhere. The District uses one application for its Application Schools. Please note requirements on the application for submission of report cards, test data, transcripts, essay and Grade Point Average information. Schools also may have other individual entry requirements. Be prepared to provide behavior reports.

Examination High Schools

During the Examination High Schools application window, all 8th grade students attending public and non-public schools are eligible to apply for admission to the 9th grade at Cass Technical High School, Renaissance High School and Martin Luther King, Jr. Senior High School's Mathematics, Science and Applied Technology (MSAT) and Center for International Studies and Commerce programs. Residency is not required. During the beginning of the school year, students must complete and submit an application to take the placement examination.

An application is available at:

- All Detroit Public Libraries
- All Detroit Public Schools Community District's Middle Schools
- Detroit Public Schools Community Districts' Parent Resource Centers
- Detroit Public Schools Community District Research and Assessment Office located in the Support Services Complex Building A - 1425 East Warren Avenue

Students must submit an application to be eligible to take the examination. Completed applications and all required documents must be submitted to the student's current school or the Detroit Public Schools' Office of Research and Assessment. Detroit Public Schools Community Districts' students who submit an application will test at their middle school. Non-

Examination High Schools (Continued)

Detroit Public Schools Community Districts’ students who submit an application will be notified of their testing date and location by mail. Applications may be mailed.

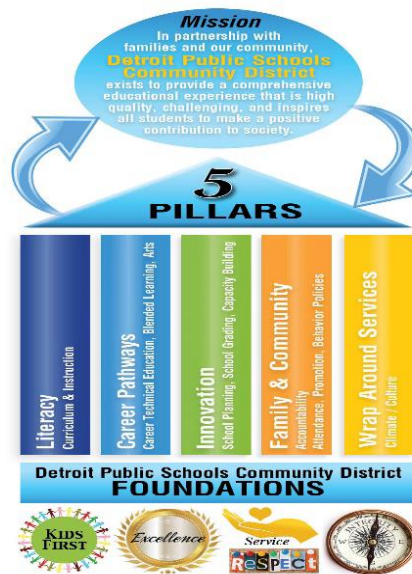
School Improvement Status

School Year	School Improvement Status
2015-2016	Priority
2014-2015	N/A

We will continue to work towards meeting our School Improvement Plan goals in English Language Arts, mathematics, science and social studies. Research-based strategies, comprehensive data analyses and data driven decision-making drives our school improvement efforts.

Detroit Public School Community District’s Core Curriculum

Detroit Public School Community District’s Academic Plan will provide guidance to align all resources in the interest of student achievement and support. Consistent with the Academic Plan is an aggressive plan designed to accelerate the rate of student achievement and to ensure that students graduate with the academic and social skills necessary for success in college and the workplace. The plan is organized around five Pillars of Excellence.



Pillar 1: Literacy

Provide a continuum of learning, enabling individuals to achieve their goals, to develop their knowledge and potential, and to participate fully in their community and wider society.

Pillar 2: Career Pathways

Provide students with a context for studying traditional academics and learning the skills psecific to a career.

Pillar 3: Innovation

Create a shift in mindset to ensure staff is encouraged to: be flexible; try something new, and explore new ways of thinking.

Pillar 4: Family & Community

Enhance and enrich positive relationships for all stakeholders.

Pillar 5: Wrap Around Services

Ensure every student received appropriate support to elevate their social, emotional, and academic performance.

Access to the Core Curriculum

The instructional strategies and grade level expectations are aligned to the Michigan Department of Education standards (science and social studies) and Common Core State Standards (mathematics and English language arts). This represents the core curriculum for Detroit Public Schools Community District which is supported by the texts, materials, computer software and other school level resources used daily in the classrooms. All of the professional development activities are aligned to the core curriculum and/or standards. The implementation is a process delineated in the District Academic Plan at:

<http://detroitk12.org/content/wp-content/uploads/2016/11/ACADEMIC-PLAN-Executive-Summary-FINAL-2.pdf>). This plan serves as the framework for each school's academic achievement plan. The frequent monitoring of the implementation of these plans are

conducted by the school diagnostic visits, review of the benchmark assessments, use of the teacher evaluation tool and adherence to the pacing calendar. The public may access the core

Access to the Core Curriculum (Continued)

curriculum via our public website www.detroitk12.org and then click on the link to the individual academic offices.

Parents/Guardians are offered classes through Parent University to increase parenting skills, early childhood literacy, adult literacy and GED. During the school year, the Parent Resource Centers are a valuable resource that allow parents and other community members to participate in regular and on-going informational and participatory sessions focused on curriculum and instruction. The Detroit Public Schools Community District Hub, Web up-dates and semi-annual progress reports are a means to disseminate achievement information to educators.

Student Achievement Results

Aggregate Student Achievement Results and Detroit Public Schools Community District's Quarterly NWEA~MAP Reading and Mathematics reports for our school can be found in the Resources section of our school's website at <http://detroitk12.org/schools/jrking/>. The following reports are available on the Detroit Public Schools Community Districts' web page at the Research, Evaluation and Assessment site at <http://detroitk12.org/data/rea/>:

Parent-Teacher Conferences (Interactions)

School Year	Total Parent Interactions	Percent
2015-2016	1505	15.0%
2014-2015	622	16.2%

The Detroit Public Schools Community Districts' Office of Research and Assessment has developed a data collection system which has enabled the District to comply with the Annual Education Report criteria of identifying the number and percent of students represented by parents at Parent-Teacher Conferences (PTC).

- 1.0 Data from the PTC Forms represent "parent interactions" with teachers, per school, per card marking.
- 2.0 Parent Interaction Definition: During Parent-Teacher Conferences (and in some instances school open houses) Schools/Teachers are advised to have each parent participant provide a parent signature-a parent may not sign for a student if they did not talk about that student.

Parent-Teacher Conferences (Interactions) (Continued):

- 3.0 Some Detroit Public Schools Community District had a very high percentage of reported parent interactions. This may be due to a number of reasons. In at least two (2) instances, the calculated percentages are in excess of 100%. In each instance, each of these two (2) schools may have experienced a large parent turnout at each of the required conferences. If during each conference, one (1) parent with two (2) students enrolled in the school visited three (3) teachers for each of their two (2) students, this would count as six (6) parent interactions, thus increasing the base number and resulting percentage.

We would like to wish our students, parents, community and staff a successful year.

Sincerely,

Felicia Cook, Principal