

DETROIT PUBLIC SCHOOLS COMMUNITY DISTRICT

Board of Education

Honorable Dr. Iris Taylor
President

Honorable Angelique Peterson-Mayberry
Vice President

Honorable Sonya Mays
Treasure

Honorable Misha Stallworth
Secretary

Honorable Dr. Deborah Hunter-Harvill
Member

Honorable Georgia Lemmons
Member

Honorable LaMar Lemmons
Member



Alycia Meriweather
Interim Superintendent

Nekeya Irby
Senior Executive Director of Curriculum,
Instruction and Accountability

Leenet Campbell-Williams
Network 1 (Priority Schools)

Rebeca Luna
Network 2

Brenda Belcher
Network 3

Alvin Wood
Senior Executive Director of
School Support

Ronald Brown Academy

11530 E. Outer Drive
Detroit, Michigan 48224-3265

2015-2016 Annual Education Report (AER) Cover Letter

March 13, 2017

Dear Parents and Community Members:

We are pleased to present you with the Annual Education Report (AER) which provides key information on the 2015-16 educational progress for the Ronald Brown Academy. The AER addresses the complex reporting information required by federal and state laws. The school's report contains information about student assessment, accountability, and teacher quality. If you have any questions about the AER, please contact Georgina Tait, Principal at (313) 886-2611 for assistance.

The AER is available for you to review electronically by visiting the District's website <http://detroitk12.org/aer>, the school's website at <http://detroitk12.org/schools/brown/> or the MiSchool Data website at <https://goo.gl/AYxUKj>. You may review a copy in the main office at your child's school or in the Parent Resource Room at Detroit Collegiate Preparatory High School at Northwestern, 2200 W. Grand Boulevard, Detroit, Michigan.

For the 2016-17 year, no new Priority or Focus schools were named; some Priority or Focus schools did exit their status because they met the exit criteria. New Reward schools were identified using school rankings and Beating the Odds information. A Focus school is one that has a large achievement gap between the highest and lowest achieving 30% of schools. A Priority school is one whose achievement and growth is in the lowest 5% of all schools in the state. A Reward school is one that has achieved one or more of the following distinctions: top 5% of schools on the Top-to-Bottom School Rankings,

top 5% of schools making the greatest gains in achievement (improvement metric), or “Beating the Odds” by outperforming the school’s predicted ranking and/or similar schools. Some schools are not identified with any of these labels. In these cases, no label is given. Our school was identified as a Priority school.

The key challenges for our school are as follows:

We did not meet the 90% attendance rate goal.

The attendance rate for the All Students subgroup is 84.80%.

We did not test 95% of our students.

Only 71.08% of the Students with Disabilities subgroup was assessed in mathematics.

We did not attain Differentiated target achievement goals for all subgroups of students in English Language Arts.

Only 2.20% of the Bottom 30% subgroup met the Differentiated target in English Language Arts.

We did not attain Differentiated target achievement goals for all subgroups of students in mathematics.

Only 4.82% of the Bottom 30% subgroup met the Differentiated target in mathematics.

We did not attain Differentiated target achievement goals for all subgroups of students in science.

Only 8.45% of the All Students; 0.00% of the Bottom 30%; 8.57% of the African American and 10.53% of the Economically Disadvantaged subgroups met the Differentiated target in science.

We did not attain Differentiated target achievement goals for all subgroups of students in social studies.

Only 14.29% of the All Students; 0.00% of the Bottom 30%; 12.50% of the African American and 10.45% of the Economically Disadvantaged subgroups met the Differentiated target in social studies.

We are actively working to address our Michigan School Scorecard issues, accelerate student achievement and close persistent gaps in achievement by implementing the following key initiatives:

We will continue to provide instruction in English Language Arts, mathematics, science and social studies using Marzano's Cycle of Learning to implement higher order thinking skills and activities as a part of our daily curriculum. We will assure that all students are provided daily lessons that are standards based with a focus on student friendly learning targets. Ronald Brown staff will implement tiered questioning and a variety of response methods to facilitate student's active interaction with the ELA content area. We will continue to implement our Family Reading Night and Reading Month; our Family Math and Science Night and monthly Math Facts activities; annual Career Day activities and field trip experiences to enhance student achievement in the Mathematics curriculum. as well as. our school wide reading initiative to enhance student achievement in the ELA curriculum. Our assessment participation rate will continue to be monitored by all instructional and testing staff to assure that we continue to meet the 95% participation rate goal.

We will continue to work to close our achievement gap by offering a variety of opportunities for students falling into the bottom 30%. Opportunities include small group instruction, and participation in after school tutorial programs.

We will continue to implement our attendance incentive programs. Students with perfect attendance for each month are recognized through posting of their names outside of the classroom and incentives such as participation in school dances, pizza parties and perfect attendance certificates. At the close of the day each day we will make school wide announcements of the daily attendance rate and classes with 0 or 1 student absent.

Parent Involvement

Ronald Brown Academy's parents can be involved through participation in Family Reading Night. They can also become involved in the Family Math and Science Night and as volunteers during March Reading month activities. Parents can also be involved in volunteering during our annual Career Day activities. Parents are able to serve as volunteers within their child's classroom, and on the local PACSA, which holds monthly meetings. Parents are able to pick up books, which selected to meet their child at his or her independent reading level, free of charge at our Family Reading events.

State law requires that we also report additional information.

Process for Assigning Pupils to the Schools

Open Enrollment Initiative

Detroit Public Schools Community District has an “Open Enrollment Initiative.” This initiative allows students to elect to attend any Detroit Public School Community District school without being required to live within the boundary for that school. The “Open Enrollment Initiative” does not apply to the Examination High Schools or Application Schools. Parents may enroll their child(ren) in the school of their interest as long as the school has not reached capacity for their particular grade. Enrollment preference is given to students who live within the boundary of a school. It should also be noted that transportation will not be provided for students who select a school outside of the boundary of their home school. “Open Enrollment Initiative” resources can be found on our website at:

http://detroitk12.org/resources/prospective_students/

Application Schools

Detroit Public Schools Community District has twenty-two (22) schools that require an application for enrollment. Families can apply during the application process window. Applications are open to families of current Detroit Public Schools Community District students as well as those newly enrolling or attending school elsewhere. The District uses one application for its Application Schools. Please note requirements on the application for submission of report cards, test data, transcripts, essay and Grade Point Average information. Schools also may have other individual entry requirements. Be prepared to provide behavior reports.

Examination High Schools

During the Examination High Schools application window, all 8th grade students attending public and non-public schools are eligible to apply for admission to the 9th grade at Cass Technical High School, Renaissance High School and Martin Luther King, Jr. Senior High School’s Mathematics, Science and Applied Technology (MSAT) and Center for International Studies and Commerce programs. Residency is not required. During the beginning of the school year, students must complete and submit an application to take the placement examination.

An application is available at:

- All Detroit Public Libraries
- All Detroit Public Schools Community District’s Middle Schools
- Detroit Public Schools Community Districts’ Parent Resource Centers

Examination High Schools (Continued)

- Detroit Public Schools Community District Research and Assessment Office located in the Support Services Complex Building A - 1425 East Warren Avenue

Students must submit an application to be eligible to take the examination. Completed applications and all required documents must be submitted to the student’s current school or the Detroit Public Schools’ Office of Research and Assessment. Detroit Public Schools Community Districts’ students who submit an application will test at their middle school. Non-Detroit Public Schools Community Districts’ students who submit an application will be notified of their testing date and location by mail. Applications may be mailed.

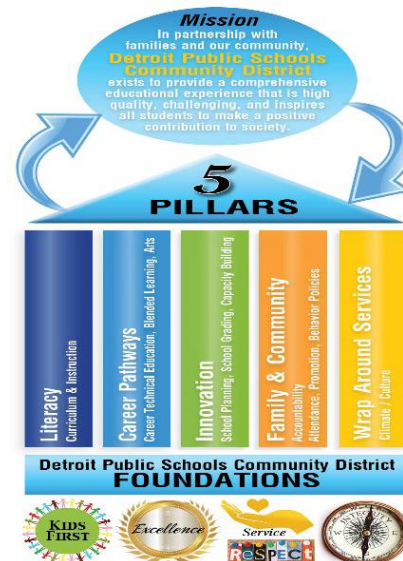
School Improvement Status

School Year	School Improvement Status
2015-2016	Priority
2014-2015	N/A

We will continue to work towards meeting our School Improvement Plan goals in English Language Arts, mathematics, science and social studies. Research-based strategies, comprehensive data analyses and data driven decision-making drives our school improvement efforts.

Detroit Public School Community District’s Core Curriculum

Detroit Public School Community District’s Academic Plan will provide guidance to align all resources in the interest of student achievement and support. Consistent with the Academic Plan is an aggressive plan designed to accelerate the rate of student achievement and to ensure that students graduate with the academic and social skills necessary for success in college and the workplace. The plan is organized around five Pillars of Excellence.



Pillar 1: Literacy

Provide a continuum of learning, enabling individuals to achieve their goals, to develop their knowledge and potential, and to participate fully in their community and wider society.

Pillar 2: Career Pathways

Provide students with a context for studying traditional academics and learning the skills psecific to a career.

Pillar 3: Innovation

Create a shift in mindset to ensure staff is encouraged to: be flexible; try something new, and explore new ways of thinking.

Pillar 4: Family & Community

Enhance and enrich positive relationships for all stakeholders.

Pillar 5: Wrap Around Services

Ensure every student received appropriate support to elevate their social, emotional, and academic performance.

Access to the Core Curriculum

The instructional strategies and grade level expectations are aligned to the Michigan Department of Education standards (science and social studies) and Common Core State Standards (mathematics and English language arts). This represents the core curriculum for Detroit Public Schools Community District which is supported by the texts, materials, computer software and other school level resources used daily in the classrooms. All of the professional development activities are aligned to the core curriculum and/or standards. The implementation is a process delineated in the District Academic Plan at: (<http://detroitk12.org/content/wp-content/uploads/2016/11/ACADEMIC-PLAN-Executive-Summary-FINAL-2.pdf>). This plan serves as the framework for each school's academic achievement plan. The frequent monitoring of the implementation of these plans are conducted by the school diagnostic visits, review of the benchmark assessments, use of the

Access to the Core Curriculum (Continued):

teacher evaluation tool and adherence to the pacing calendar. The public may access the core curriculum via our public website www.detroitk12.org and then click on the link to the individual academic offices.

Parents/Guardians are offered classes through Parent University to increase parenting skills, early childhood literacy, adult literacy and GED. During the school year, the Parent Resource Centers are a valuable resource that allow parents and other community members to participate in regular and on-going informational and participatory sessions focused on curriculum and instruction. The Detroit Public Schools Community District Hub, Web up-dates and semi-annual progress reports are a means to disseminate achievement information to educators.

Student Achievement Results

Aggregate Student Achievement Results and Detroit Public Schools Community District's Quarterly NWEA~MAP Reading and Mathematics reports for our school can be found in the Resources section of our school's website at <http://detroitk12.org/schools/brown/>. The following reports are available on the Detroit Public Schools Community Districts' web page at the Research, Evaluation and Assessment site at <http://detroitk12.org/data/rea/>:

Parent-Teacher Conferences (Interactions)

School Year	Total Parent Interactions	Percent
2015-2016	157	11.1%
2014-2015	635	46.7%

The Detroit Public Schools Community Districts' Office of Research and Assessment has developed a data collection system which has enabled the District to comply with the Annual Education Report criteria of identifying the number and percent of students represented by parents at Parent-Teacher Conferences (PTC).

- 1.0 Data from the PTC Forms represent "parent interactions" with teachers, per school, per card marking.
- 2.0 Parent Interaction Definition: During Parent-Teacher Conferences (and in some instances school open houses) Schools/Teachers are advised to have each parent participant provide a parent signature-a parent may not sign for a student if they did not talk about that student.

Parent-Teacher Conferences (Interactions) (Continued)

- 3.0 Some Detroit Public Schools Community District had a very high percentage of reported parent interactions. This may be due to a number of reasons. In at least two (2) instances, the calculated percentages are in excess of 100%. In each instance, each of these two (2) schools may have experienced a large parent turnout at each of the required conferences. If during each conference, one (1) parent with two (2) students enrolled in the school visited three (3) teachers for each of their two (2) students, this would count as six (6) parent interactions, thus increasing the base number and resulting percentage.

We would like to wish our students, parents, community and staff a successful year.

Sincerely,

Georgina Tait, Principal